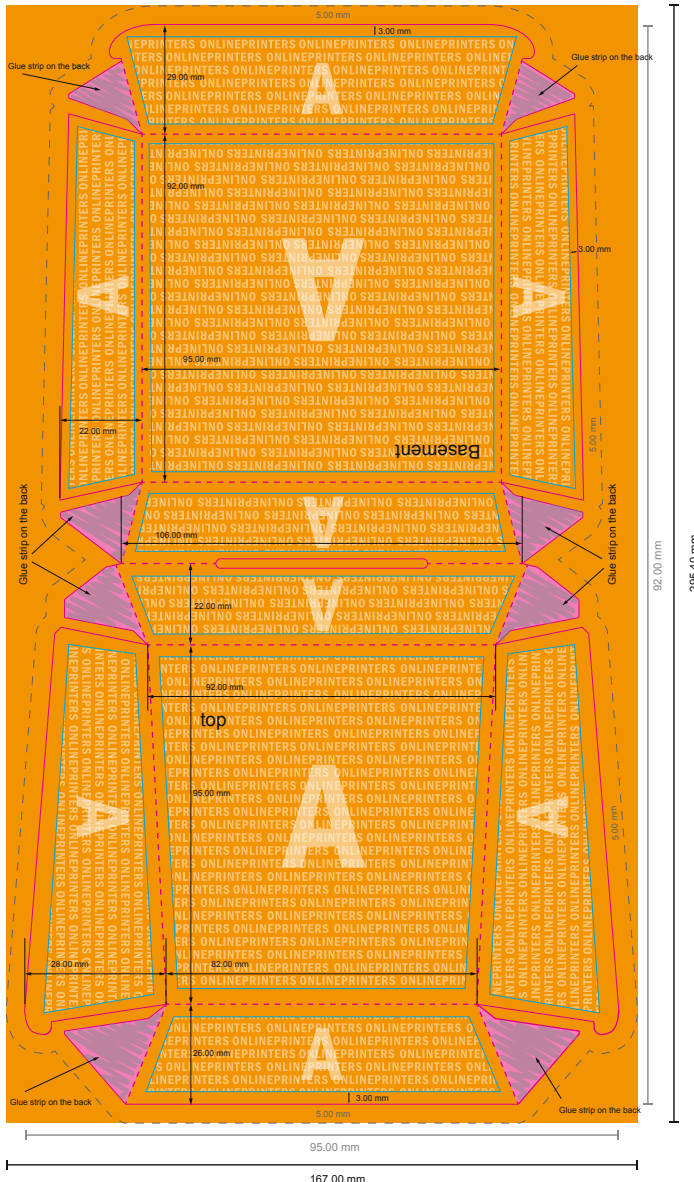


9.5 x 9.2 x 4.2 cm



NOTE

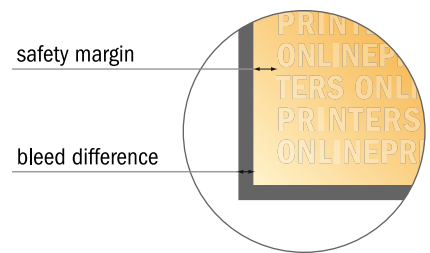
Please remove the die line from the download template before generating your artwork files. Please provide a second file (view file) to specify the position of the die line.

- Data format:
15.70 x 28.54 cm

- Data format (incl. 5.00 mm bleed):
16.70 x 29.54 cm

- Trimmed size:
9.50 x 9.20 cm

- **Safety margin**
Maintaining 4 mm space between the text/information and the edge of the trimmed format prevents undesirable cuts.



Please note:

- Allow for trim allowance and safety margin according to instructions.
- Arrange background graphics, images or graphics up to the edge of the data format.
- Tolerances may occur during production due to cutting, punching and folding processes.
- This sketch is not drawn to scale.
- Printing data: Instructions and templates can be found under the menu item "Printing data" at www.onlineprinters.com.