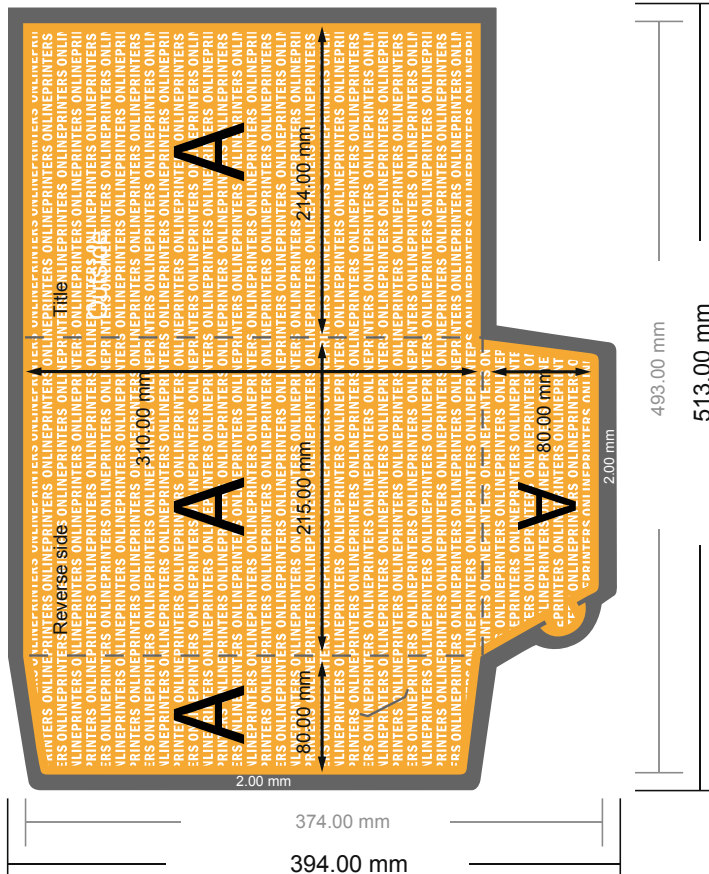


## Premium Folders with additional accessories

A4 • Portrait

#11 Format view rotated by 90 degrees.



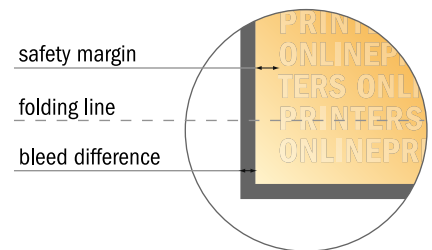
### NOTE

Please remove the die line from the download template before generating your artwork files.  
Please provide a second file (view file) to specify the position of the die line.

- Data format:  
51.30 x 39.40 cm

- Trimmed size (closed):  
21.50 x 31.00 cm

- **Safety margin**  
Maintaining 4 mm space between the text/information and the edge of the trimmed format prevents undesirable cuts.



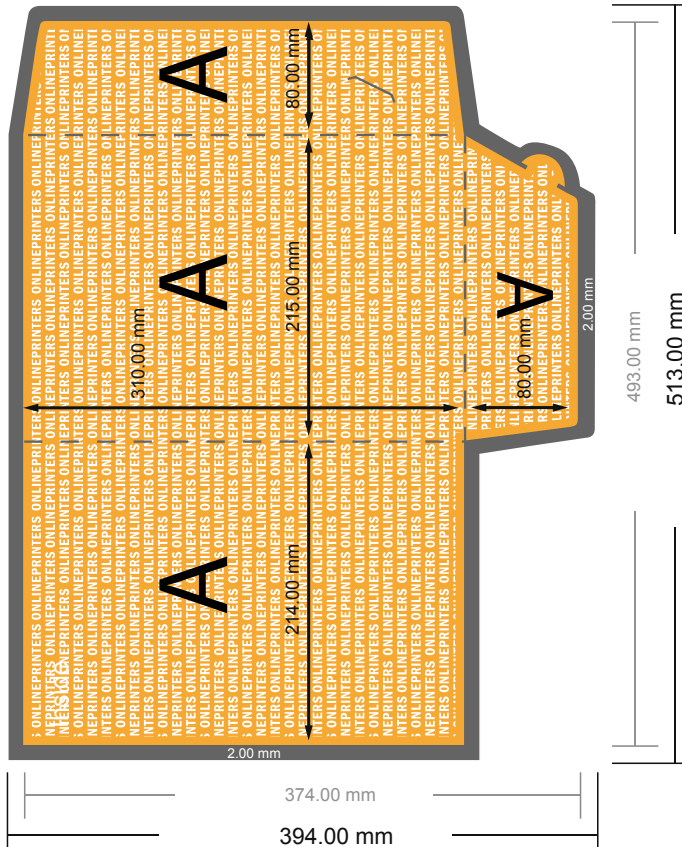
### Please note:

- Allow for trim allowance and safety margin according to instructions.
- Arrange background graphics, images or graphics up to the edge of the data format.
- Tolerances may occur during production due to cutting, punching and folding processes.
- This sketch is not drawn to scale.
- Printing data: Instructions and templates can be found under the menu item "Printing data" at [www.onlineprinters.com](http://www.onlineprinters.com).

## Premium Folders with additional accessories

A4 • Portrait

### #11 Format view rotated by 90 degrees.

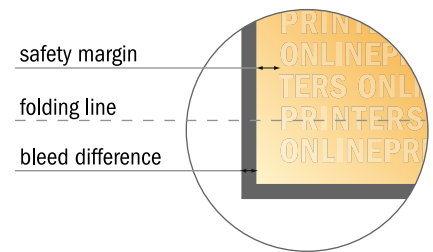


#### NOTE

Please remove the die line from the download template before generating your artwork files.  
Please provide a second file (view file) to specify the position of the die line.

- Data format:  
51.30 x 39.40 cm
- Trimmed size (closed):  
21.50 x 31.00 cm

- **Safety margin**  
Maintaining 4 mm space between the text/information and the edge of the trimmed format prevents undesirable cuts.



#### Please note:

- Allow for trim allowance and safety margin according to instructions.
- Arrange background graphics, images or graphics up to the edge of the data format.
- Tolerances may occur during production due to cutting, punching and folding processes.
- This sketch is not drawn to scale.
- Printing data: Instructions and templates can be found under the menu item "Printing data" at [www.onlineprinters.com](http://www.onlineprinters.com).